

1085255  
<https://www.phoenixcontact.com/it/products/1085255>

Please be informed that the data shown in this PDF document is generated from our online catalog. Please find the complete data in the user documentation. Our general terms of use for downloads are valid.



Narrow Ethernet switch, sixteen RJ45 ports with 10/100 Mbps on all ports, automatic data transmission speed detection, autocrossing function, and QoS

Your advantages

- QoS-prioritized (Quality of Service) messages
- RJ45 ports support a transmission speed of 10/100 Mbps
- Local diagnostic indicators with LEDs
- PROFINET PTCP filter for reliable communication on PROFINET networks
- Enhanced traffic prioritization for automation protocols
- Energy-efficient Ethernet in accord. with IEEE 802.3az
- PROFINET Conformance Class A for real-time data exchange
- Auto negotiation and autocrossing detection simplifies installation and setup

Commercial data

Item number	1085255
Packing unit	1 pc
Minimum order quantity	1 pc
Sales key	DNN
Product key	DNN116
GTIN	4055626835037
Weight per piece (including packing)	340 g
Weight per piece (excluding packing)	266 g
Customs tariff number	85176200
Country of origin	TW

# FL SWITCH 1016N - Industrial Ethernet Switch



1085255

<https://www.phoenixcontact.com/it/products/1085255>

## Technical data

### Dimensions

Width	40 mm
Height	140.4 mm
Depth	92.4 mm

### Notes

#### Note on application

Note on application	Only for industrial use
---------------------	-------------------------

#### Utilization restriction

EMC note	EMC: class A product, see manufacturer's declaration in the download area
----------	---

### Material specifications

Housing material	Polycarbonate fiber reinforced
------------------	--------------------------------

### Mounting

Mounting type	DIN rail mounting
---------------	-------------------

### Interfaces

#### Ethernet (RJ45)

Number of interfaces	16
Connection method	RJ45
Note on the connection method	Auto negotiation and autocrossing
Transmission speed	10/100 Mbps
Transmission physics	Ethernet in RJ45 twisted pair
Transmission length	100 m (per segment)
Signal LEDs	Data receive, link status
No. of channels	16 (RJ45 ports)
Input buffer	768 Kbits
Output buffer	768 Kbits

### Product properties

Product family	Unmanaged Switch 1000
MTTF	63.7 Years (MIL-HDBK-217F standard, temperature 25°C, operating cycle 100%)
	729 Years (SN 29500 standard, temperature 25°C, operating cycle 21%)
	639 Years (Telcordia standard, 25°C temperature, 21% operating cycle (5 days a week, 8 hours a day))
Basic functions	Unmanaged switch
	Autonegotiation

# FL SWITCH 1016N - Industrial Ethernet Switch



1085255

<https://www.phoenixcontact.com/it/products/1085255>

	Store and Forward switching mode
--	----------------------------------

## Switch functions

Basic functions	Unmanaged switch
	Autonegotiation
	Store and Forward switching mode
PROFINET conformance class	Conformance Class A
MAC address table	8k
Status and diagnostic indicators	LEDs: U <sub>S</sub> , link and activity per port
Additional functions	100 BASE-TX/100BASE-FX (IEEE 802.3u)
	Quality of Service (QoS) prioritization (IEEE 802.1p)
	Energy-efficient Ethernet (IEEE 802.3az)
	10Base-T (IEEE 802.3)

## Security functions

Basic functions	Unmanaged switch
	Autonegotiation
	Store and Forward switching mode

## Electrical properties

Maximum power dissipation for nominal condition	2.394 W (at 24 V DC)
Transmission medium	Copper

## Supply

Supply voltage (DC)	24 V
Supply voltage (AC)	24 V AC (50/60 Hz)
Supply voltage range	9 V DC ... 32 V DC
	18 V AC ... 30 V AC (50/60 Hz)
Power supply connection	Via COMBICON, max. conductor cross-section 2.5 mm <sup>2</sup>
Residual ripple	3.6 V <sub>PP</sub> (within the permitted voltage range)
Max. current consumption	266 mA (at 9 V DC)
Typical current consumption	68 mA (at 24 V DC)

## Connection data

### Connection technology

Connection name	Power supply
pluggable	yes

### Power supply

Connection method	Push-in spring connection
Conductor cross-section, rigid	0.2 mm <sup>2</sup> ... 2.5 mm <sup>2</sup>
Conductor cross-section, flexible	0.2 mm <sup>2</sup> ... 2.5 mm <sup>2</sup>
Conductor cross-section AWG	24 ... 12
Conductor cross-section, flexible, with ferrule, with plastic sleeve	0.25 mm <sup>2</sup> ... 2.5 mm <sup>2</sup>
Conductor cross-section, flexible, with ferrule, without plastic sleeve	0.25 mm <sup>2</sup> ... 2.5 mm <sup>2</sup>

# FL SWITCH 1016N - Industrial Ethernet Switch



1085255

<https://www.phoenixcontact.com/it/products/1085255>

Stripping length	10 mm
------------------	-------

## Environmental and real-life conditions

### Ambient conditions

Degree of protection	IP30
Ambient temperature (operation)	-10 °C ... 60 °C
Ambient temperature (storage/transport)	-40 °C ... 85 °C
Altitude	2000 m (maximum)
Permissible humidity (operation)	5 % ... 95 % (non-condensing)
Permissible humidity (storage/transport)	5 % ... 95 % (non-condensing)
Shock (operation)	30g (EN 60068-2-27)
Vibration (operation)	in acc. with IEC 60068-2-6: 5g, 150 Hz
Air pressure (operation)	79 kPa ... 108 kPa up to 2000 m above mean sea level (Without derating)
Air pressure (storage/transport)	79 kPa ... 108 kPa up to 2000 m above mean sea level (Without derating)

## Approvals

### Conformity/Approvals

Conformance	CE-compliant
UL, USA / Canada	UL 61010-1, UL 61010-2-201 Class I, Div. 2, Groups A, B, C, D, T4 Class I, Zone 2, Group IIC, T4
FCC	Title 47 Part 15 Subpart B:2018 Class A

## EMC data

Electromagnetic compatibility	Conformance with EMC Directive 2014/30/EU
Conformance with EMC directives	EN 61000-6-2 EN 61000-4-2 (ESD) Criterion B
	EN 61000-6-2 EN 61000-4-3 (electromagnetic fields) Criterion A
	EN 61000-6-2 EN 61000-4-4 (EFT burst) Criterion A
	EN 61000-6-2 EN 61000-4-5 (surge) Criterion B
	EN 61000-6-2 EN 61000-4-6 (line noise immunity) Criterion A
	EN 61000-6-2 EN 61000-4-8 (electromagnetic fields) Criterion A
Noise immunity	EN 61000-6-2 Class A
	EN 61000-6-2:2019

### Noise emission

Standards/regulations	EN_61000-6-4:2019
-----------------------	-------------------

## System properties

### Functionality

Basic functions	Unmanaged switch
	Autonegotiation
	Store and Forward switching mode

# FL SWITCH 1016N - Industrial Ethernet Switch



1085255

<https://www.phoenixcontact.com/it/products/1085255>

## Signaling

Status display	LEDs: U <sub>S</sub> , link and activity per port
----------------	---

# FL SWITCH 1016N - Industrial Ethernet Switch



1085255

<https://www.phoenixcontact.com/it/products/1085255>

## Approvals

To download certificates, visit the product detail page: <https://www.phoenixcontact.com/it/products/1085255>



**IECEE CB Scheme**

Approval ID: DK-91138-UL



**IECEE CB Scheme**

Approval ID: DK-91138-UL



**KC**

Approval ID: R-R-PCK-1085255



**CC-Link IE Field**

Approval ID: NRT-IT-00068



**cULus Listed**

Approval ID: E238705



**cULus Listed**

Approval ID: E238705



**KC**

Approval ID: R-R-PCK-1085255



**cULus Listed**

Approval ID: E140304



**cULus Listed**

Approval ID: E140304



**IECEE CB Scheme**

Approval ID: DK-91246-UL



**IECEE CB Scheme**

Approval ID: DK-91246-UL

# FL SWITCH 1016N - Industrial Ethernet Switch



1085255

<https://www.phoenixcontact.com/it/products/1085255>

**CC-Link IE Field**

**CC-Link IE Field**  
Approval ID: NRT-IT-00068



**cUL Listed**  
Approval ID: E196811



**UL Listed**  
Approval ID: E196811



**UL Listed**  
Approval ID: E196811



**cUL Listed**  
Approval ID: E196811

# FL SWITCH 1016N - Industrial Ethernet Switch



1085255

<https://www.phoenixcontact.com/it/products/1085255>

## Classifications

### ECLASS

ECLASS-13.0	19170402
ECLASS-15.0	19170402

### ETIM

ETIM 10.0	EC000734
-----------	----------

### UNSPSC

UNSPSC 21.0	43222600
-------------	----------



# FL SWITCH 1016N - Industrial Ethernet Switch



1085255

<https://www.phoenixcontact.com/it/products/1085255>

## Environmental product compliance

### EU RoHS

Fulfills EU RoHS substance requirements	Yes
Exemption	7(c)-I

### China RoHS

Environment friendly use period (EFUP)	EFUP-50
	An article-related China RoHS declaration table can be found in the download area for the respective article under "Manufacturer declaration". For all articles with EFUP-E, no China RoHS declaration table issued and required.

### EU REACH SVHC

REACH candidate substance (CAS No.)	No substance above 0.1 wt%
-------------------------------------	----------------------------

### EF3.1 Climate Change

CO2e kg	18.77 kg CO2e
---------	---------------

1085255

<https://www.phoenixcontact.com/it/products/1085255>

## Accessories

### MVSTBW 2,5/ 3-ST-5,08 GY - PCB connector

1783685

<https://www.phoenixcontact.com/it/products/1783685>



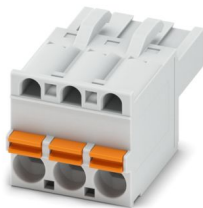
PCB connector, nominal cross section: 2.5 mm<sup>2</sup>, color: gray, nominal current: 12 A, rated voltage (III/2): 320 V, contact surface: Sn, contact connection type: Socket, number of potentials: 3, number of rows: 1, number of positions: 3, number of connections: 3, product range: MVSTBW 2,5/...-ST, pitch: 5.08 mm, connection method: Screw connection with tension sleeve, screw head form: L Slotted, conductor/PCB connection direction: -90 °, locking clip: - Locking clip, plug-in system: COMBICON MSTB 2,5, locking: without, mounting method: without, type of packaging: packed in cardboard

---

### FKCT 2,5/ 3-ST KMGY - PCB connector

1998263

<https://www.phoenixcontact.com/it/products/1998263>



PCB connector, nominal cross section: 2.5 mm<sup>2</sup>, color: light gray, nominal current: 12 A, rated voltage (III/2): 320 V, contact surface: Sn, contact connection type: Socket, number of potentials: 3, number of rows: 1, number of positions: 3, number of connections: 3, product range: FKCT 2,5/...-ST, pitch: 5 mm, connection method: Push-in spring connection, conductor/PCB connection direction: 0 °, locking clip: - Locking clip, plug-in system: COMBICON MSTB 2,5, locking: without, mounting method: without, type of packaging: packed in cardboard

# FL SWITCH 1016N - Industrial Ethernet Switch



1085255

<https://www.phoenixcontact.com/it/products/1085255>

## FL PANEL ADAPTER 40 - Mounting panel

1085486

<https://www.phoenixcontact.com/it/products/1085486>



The FL PANEL ADAPTER 40 is designed to allow products 40 mm wide to be mounted flush to a panel, in any orientation.

---

## FL DIN-RAIL ADAPTER 40 - Mounting panel

1085484

<https://www.phoenixcontact.com/it/products/1085484>



The FL DIN-RAIL ADAPTER 40 is designed to allow products 40 mm wide to be mounted flush to a standard 35 mm DIN rail, in any orientation.

# FL SWITCH 1016N - Industrial Ethernet Switch



1085255

<https://www.phoenixcontact.com/it/products/1085255>

## DT-LAN-CAT.6+ - Surge protection device

2881007

<https://www.phoenixcontact.com/it/products/2881007>



Surge protection in accordance with Class E<sub>A</sub> (CAT6<sub>A</sub>), for Gigabit Ethernet (up to 10 Gbps), token ring, FDDI/CDDI, ISDN, and DS1. Suitable for Power over Ethernet (PoE++ / 4PPoE) "Mode A" and "Mode B". RJ45 attachment plug with separate grounding cable and ground connection snap-on foot for NS 35 DIN rails.

---

## FL CAT5 PATCH 0,5 - Patch cable

2832263

<https://www.phoenixcontact.com/it/products/2832263>



Patch cable, CAT5, assembled, 0.5 m

# FL SWITCH 1016N - Industrial Ethernet Switch



1085255

<https://www.phoenixcontact.com/it/products/1085255>

## FL CAT5 PATCH 1,0 - Patch cable

2832276

<https://www.phoenixcontact.com/it/products/2832276>



Patch cable, CAT5, assembled, 1 m

---

## FL CAT5 PATCH 2,0 - Patch cable

2832289

<https://www.phoenixcontact.com/it/products/2832289>



Patch cable, CAT5, assembled, 2 m

# FL SWITCH 1016N - Industrial Ethernet Switch



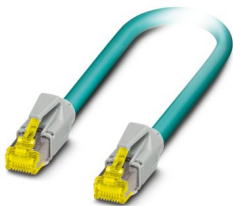
1085255

<https://www.phoenixcontact.com/it/products/1085255>

## NBC-R4AC-R4AC-IE8A/.../... - Patch cable

1411854

<https://www.phoenixcontact.com/it/products/1411854>



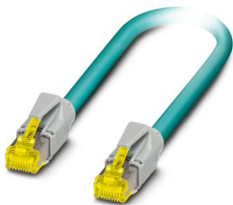
Patch cable, degree of protection: IP20, number of positions: 8, 10 Gbps, CAT6<sub>A</sub>, cable outlet: straight, Ethernet

---

## NBC-R4AC/10G-R4AC/10G-94F/2,0 - Patch cable

1408360

<https://www.phoenixcontact.com/it/products/1408360>



Patch cable, CAT6<sub>A</sub>, 4-pair, shielded, connection not crossed (line), assembled at both ends with RJ45/IP20 connectors, outer sheath material: PUR, length: 2.0 m

# FL SWITCH 1016N - Industrial Ethernet Switch



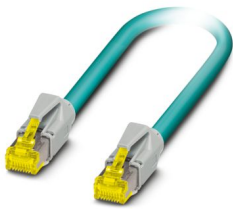
1085255

<https://www.phoenixcontact.com/it/products/1085255>

## NBC-R4AC/10G-R4AC/10G-94F/3,0 - Patch cable

1408365

<https://www.phoenixcontact.com/it/products/1408365>



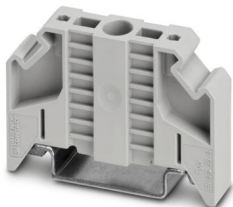
Patch cable, CAT6<sub>A</sub>, 4-pair, shielded, connection not crossed (line), assembled at both ends with RJ45/IP20 connectors, outer sheath material: PUR, length: 3.0 m

---

## E/NS 35 N - End bracket

0800886

<https://www.phoenixcontact.com/it/products/0800886>



End clamp, width: 9.5 mm, color: gray

# FL SWITCH 1016N - Industrial Ethernet Switch

1085255

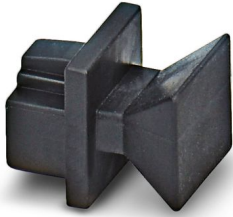
<https://www.phoenixcontact.com/lt/products/1085255>



## FL RJ45 PROTECT CAP - Dust protection

2832991

<https://www.phoenixcontact.com/lt/products/2832991>



Dust protection caps for RJ45 socket

---

Phoenix Contact 2026 © - all rights reserved

<https://www.phoenixcontact.com>

Phoenix Contact UAB

Svitrigailos str. 11B

03228 Vilnius

+370 5 2106321

[balticinfo@phoenixcontact.com](mailto:balticinfo@phoenixcontact.com)